

kör

LIVING



UNDERGROUND

Why Co-living?

BRIXTON STATION

07

07

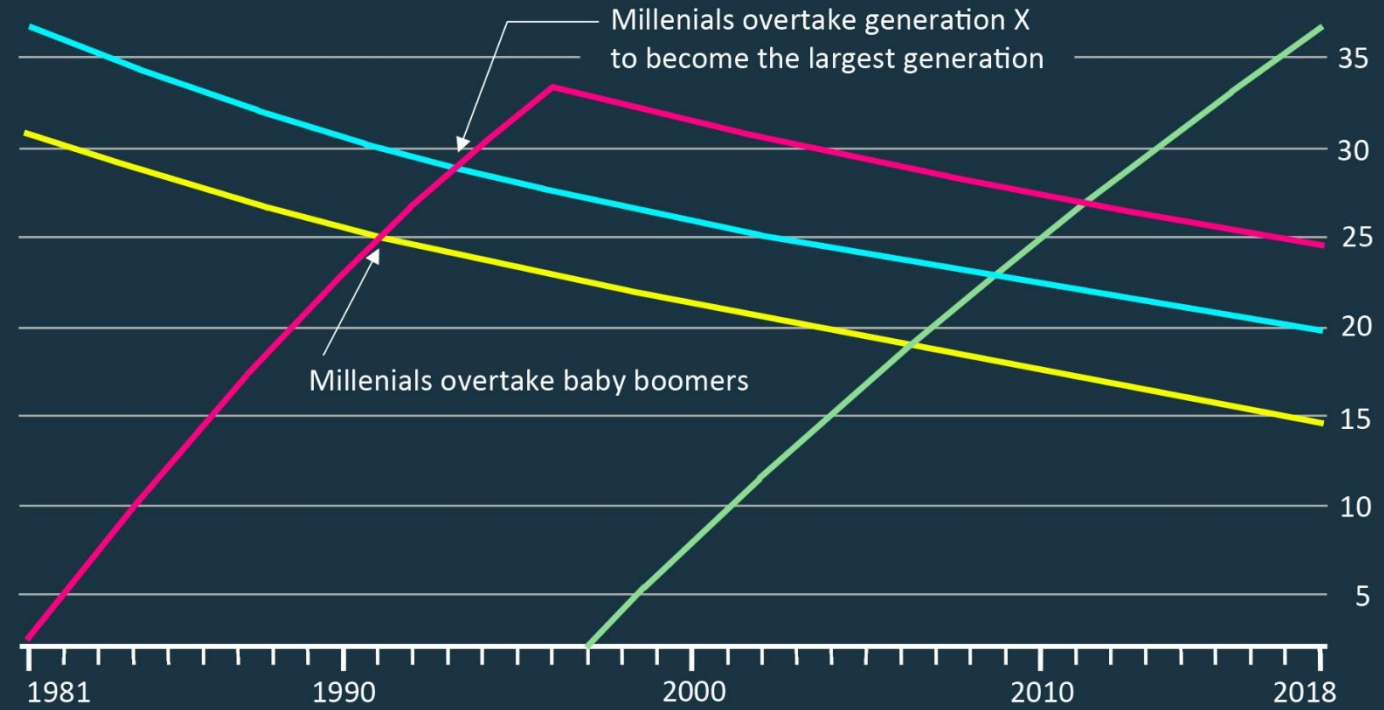
The Millennial Disruption



Globally, millennials have outnumbered baby boomers for more than a quarter of a century

Generation by proportion of global population (%)

- Boomers
- Gen X
- Millenials
- Post-millenials



Source: Financial Times (July, 2018)

Altered Aspirations & Priorities

Their priorities have evolved—or at least been delayed—by financial or other constraints.

Percent indicating they have the following ambitions:



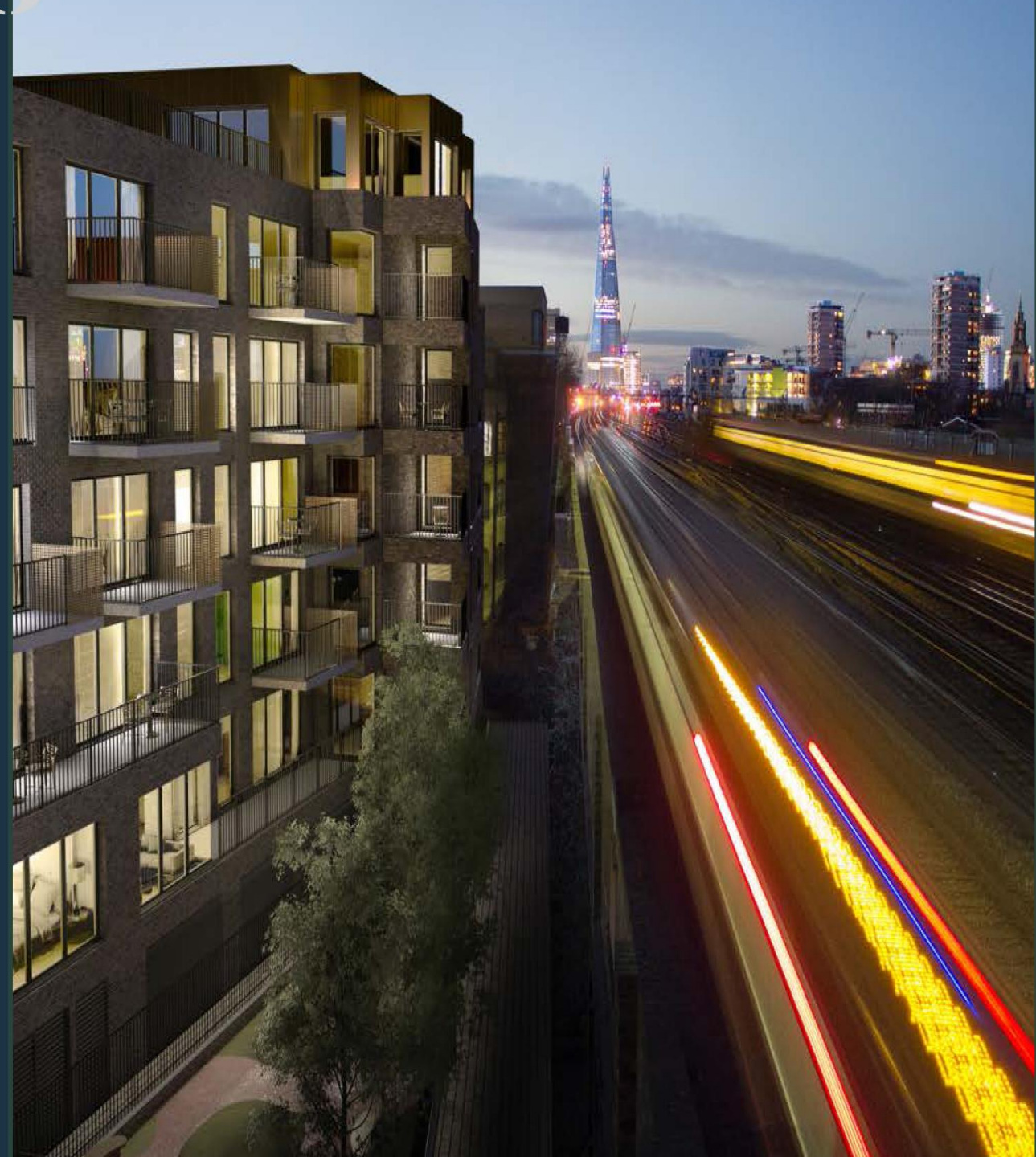
Source: The Deloitte Global Millennial Survey 2019

Kor Living – The Concept



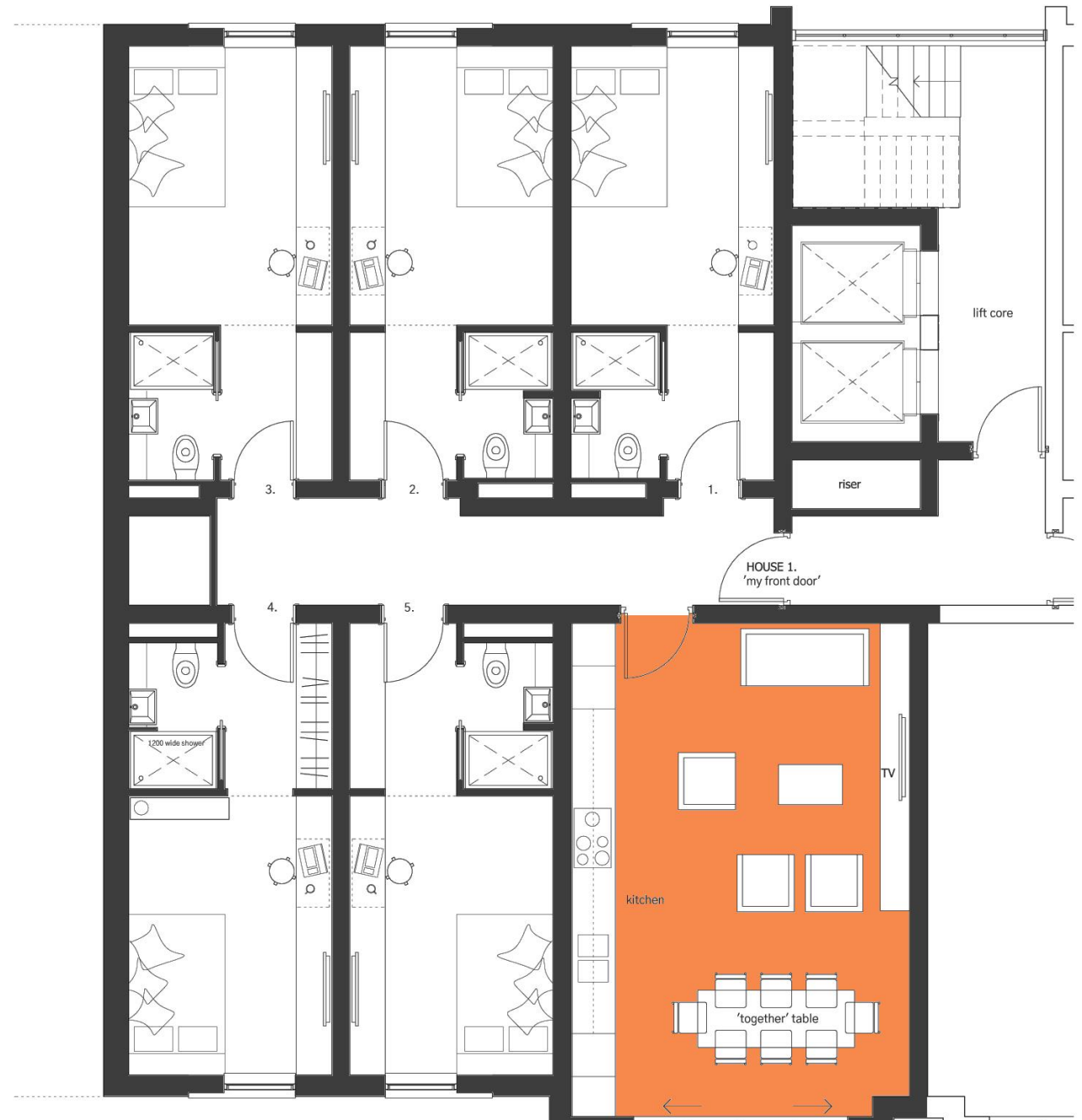
My city

Our buildings are well located, situated in vibrant areas with plenty of local restaurants, coffee shops, pubs, shops, local parks and recreation areas. They also benefit from excellent public transport connections within 10 minutes' walk, opening up access to the nightlife and culture of the city and beyond.



My house

At the heart of our concept is the notion of families and friends living together in houses, enjoying all the social benefits of a flat share with none of the pitfalls. We make sure everyone knows the other people living not only in their house, but also living nearby in the wider community.



The image shows the exterior of the Electric Cinema building. At the top, a large red neon sign in a cursive font reads "Electric" above the word "CINEMA" in a blocky, red font. The sign is set against a dark blue background within a white arched frame. Below the sign is a window with multiple panes and light-colored curtains. The building's facade is light-colored with classical architectural elements, including columns and decorative carvings. A black street lamp is visible on the right side. At the bottom, there are signs for "NOW SHOWING" and "PROGRAMME".

What are the challenges ?

- Planning
- Politics & Legislation
- Land supply

kör

LIVING