

Habinteg

Accessible homes. Independent lives.

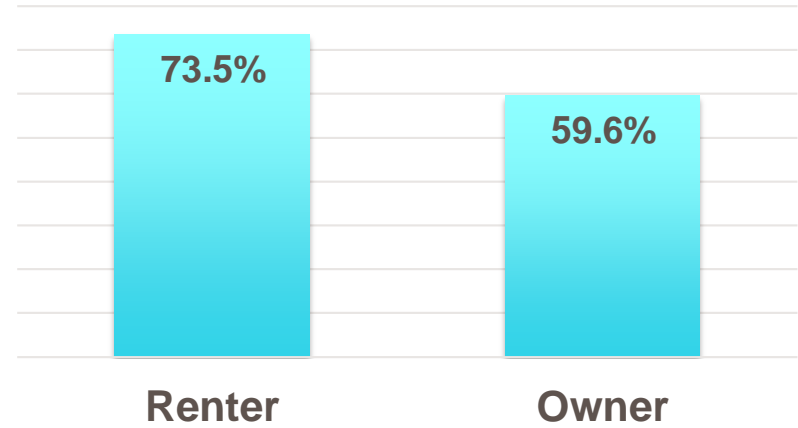
Ageing in place 2019

**How homes with adaptive super powers
provide the independence older people want**

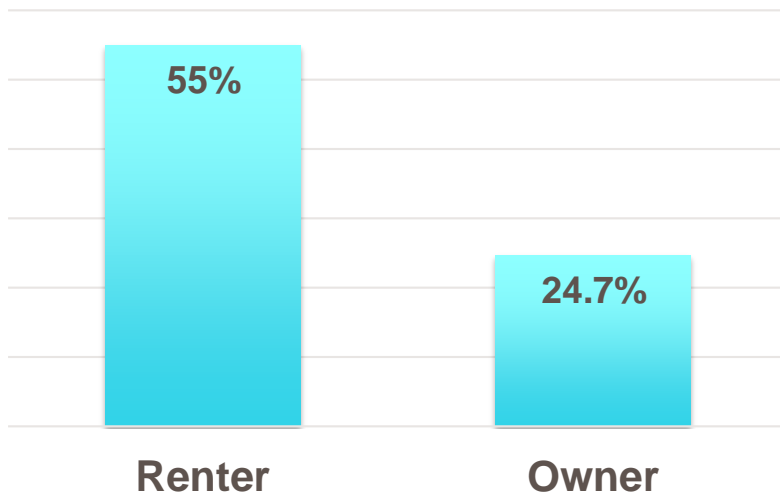
Sheron Carter, CEO, Habinteg



Disability and chronic illness



Lives alone



28.4% households are 65+

Age	Renter	Owner
65-74	15.1%	84.9%
75+	21.1%	78.9%

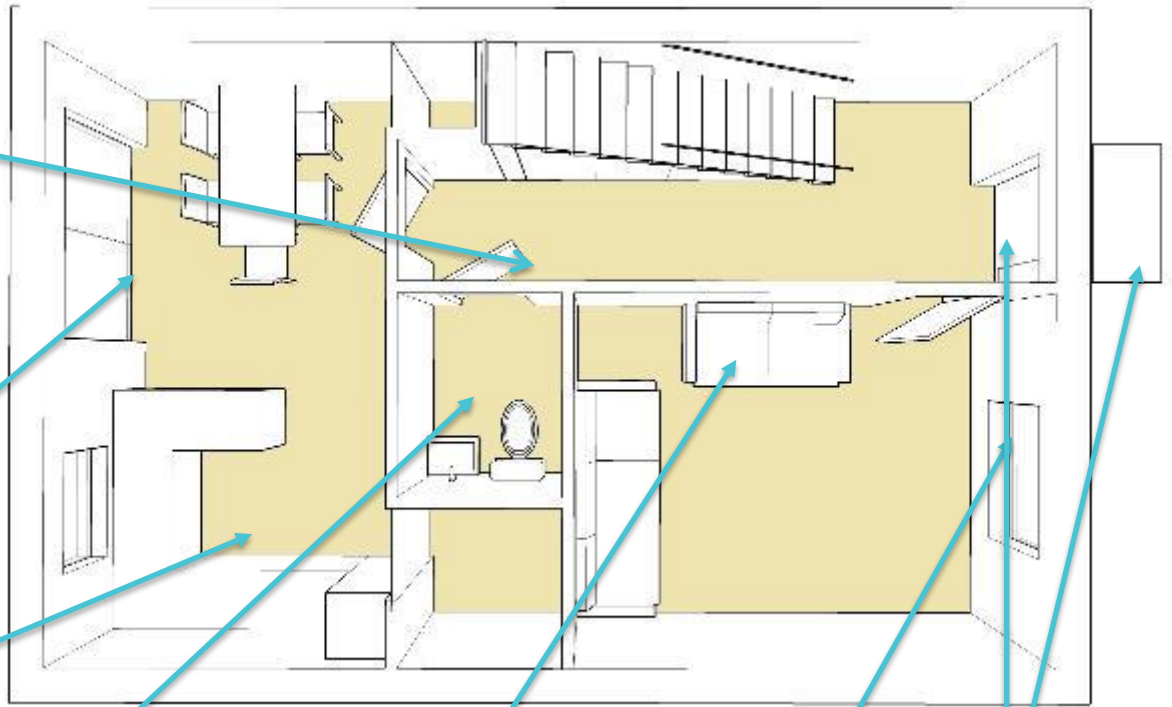


Homes with adaptive superpowers





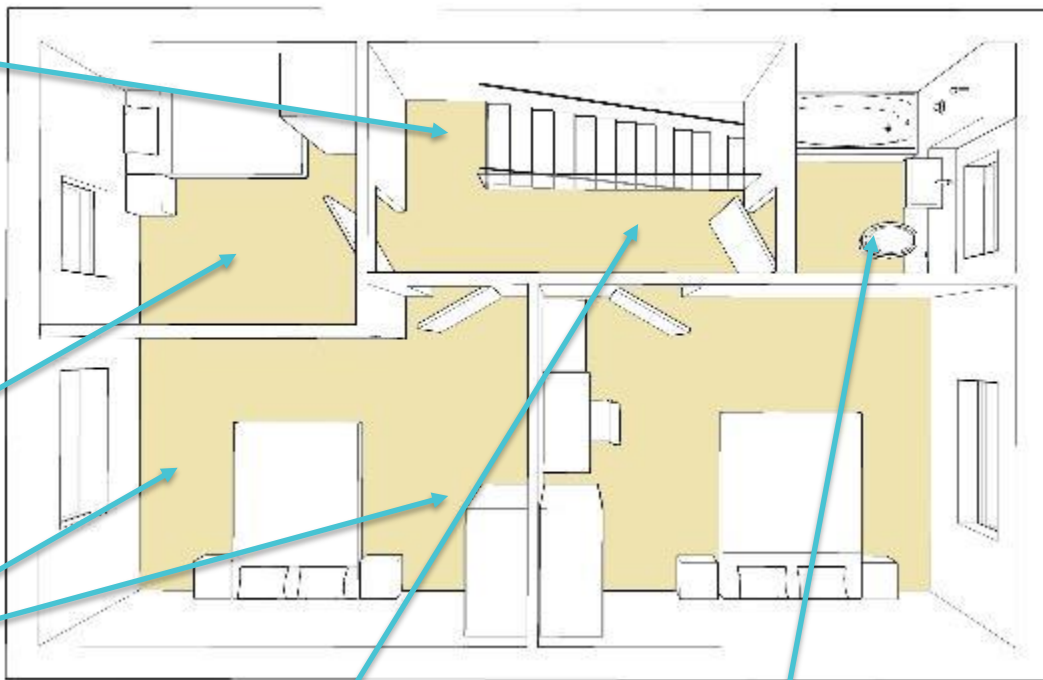
Accessible threshold to rear doors



Living area at entrance level

Low level glazing and window handle heights





Clear access route to reach the bedroom windows



Doors and corridors of adequate width

Bathroom with clear access zones to give access to all sanitary ware

Category 2 Accessible, adaptable standard. Upper floor.

What about existing homes?



80% of homes that we'll live in in 2050 have already been built.

Only 7% of English homes have the 4 access features that make them 'visitable'



Refits and upgrades



Speedier solutions

Trusted Assessors



Summing up

- Homes for the future need to be accessible, sustainable and techno-connected for all segments of the market
 - We can improve existing stock as part of planned works programmes
 - Strategies to speed up adaptations can help ensuring homes remain suitable for tenants' changing needs
-

For more...

www.habinteg.org.uk @habinteg

- Policy briefings, reports and analysis
- #foraccessiblehomes campaign

www.cae.org.uk @cae_info

- technical access consultancy
- training
- guides and publications

Accessible homes. Independent lives.
