

Ageing in Place

Helen Charlesworth-May

Strategic Director Adult Social Care and Health

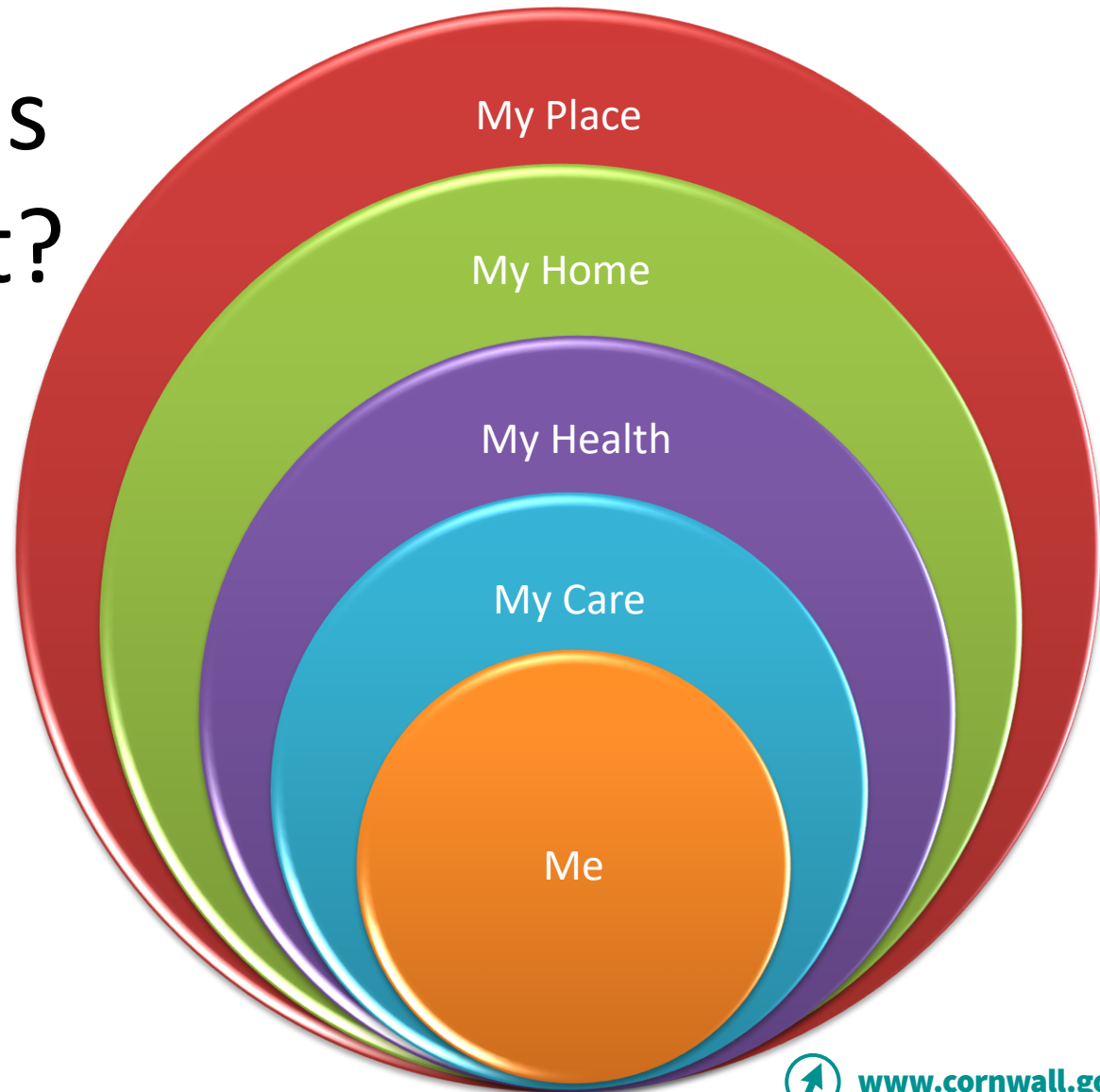
7th October 2019



Health, Housing & Care Integration

Why is this important?

26 February 2019
The Cost of
Unhealthy
Housing on the
NHS.





Rural Cornwall



- 20% affordable housing in urban areas
- Less likely to be adapted for ageing



- 49% of rural households have a regular bus service

- Estimated that $\frac{1}{2}$ rural households over 65
- More 75 year olds living in rural areas than urban areas
- Rural population ageing faster than other parts of the Country

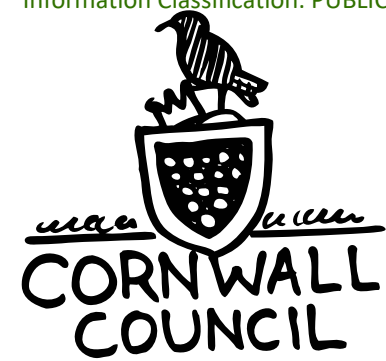


- 12% higher incidence of fuel poverty in rural area compared with 10% in urban areas
- In 2010 36% of rural homes did not have access to gas.



- 20% of GP services are in rural areas
- Average journeys to GP are longer
- Higher than national average for medical home visits





Our Ambition



- **Create strong communities** based on a culture of dignity, respect and compassion; and for older people and people with disabilities to remain deeply rooted in our communities.
- **Sharing responsibility** to create healthy communities that actively embrace and provide for the needs and aspirations of our elders and other vulnerable adults.
- To **provide homes** that are appropriate for our future society.
- Empowering professionals to work more closely with people using a **strength based approach** to meeting their needs



My Place

Create strong
communities

Shared
responsibility

Social Capital

Affordable and
appropriate housing
options



Community Infrastructure



- Multi-use venue with storage
- Riverside park
- Plen-an-Gwarry
- Improved public transport links

Shops and Restaurants



- Riverside eateries
- Artisans
- Small independent shops

Workspace



- Collaborative work space (provision for start-ups)
- Modular office space (flexible workspace)
- Traditional office offering

Learning and Innovation



- The Hive - Digital Innovation Space by Falmouth University
- Research and Development Clusters
- High Tech Collaborations
- Events and Activities

Leisure



- Bowling Alley
- Kids play zone
- Food and beverage operators
- Gym / Well-being

New Homes



- Affordable homes
- Townhouses and apartments
- Inclusive homes for our elders
- Accommodation for scholars and students

Hospitality



- 80-100 room hotel
- Small ground floor shops and commercial units



A Local Centre



A local centre can provide an active hub for new and existing communities and can incorporate shops, offices, cafes/restaurants, homes and community facilities to create a self sustaining, busy and vibrant centre throughout the day and evening.

A well functioning local centre can help to build a new community and forge links with existing areas; supporting the health and well-being of the community by enabling interactions between residents, allowing walking/cycling to be incorporated into daily routines and providing mental and physical health benefits.



My Home

Cornwall Pattern Book

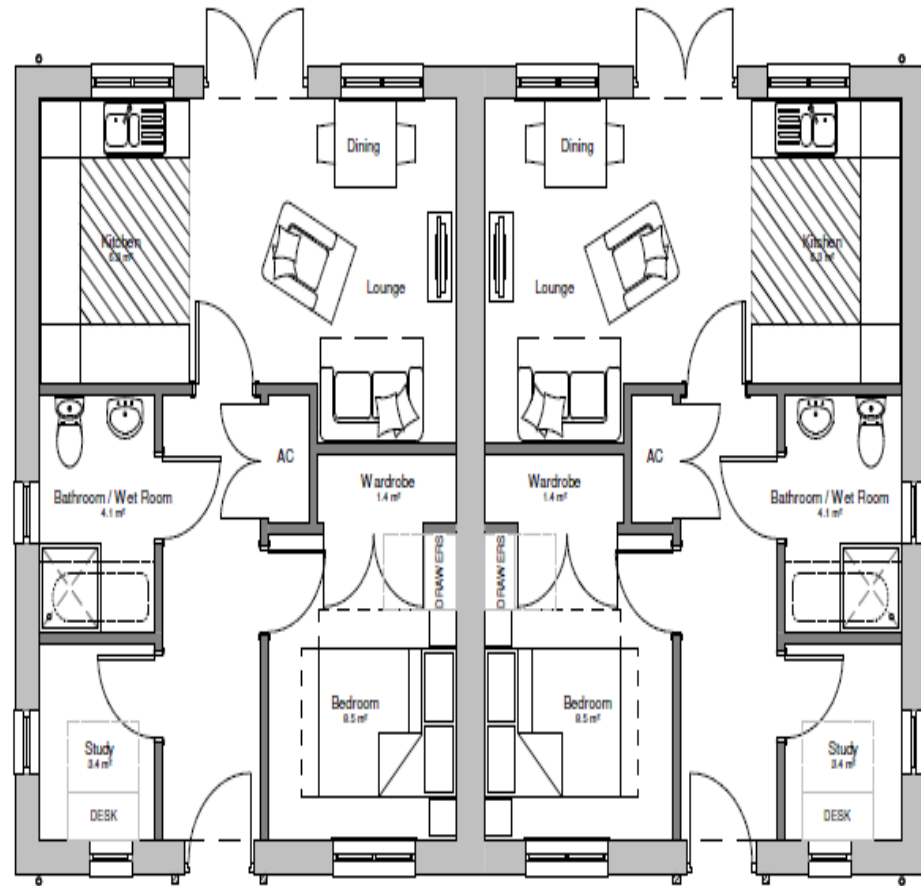
- Fully Accessible
- Meeting Wellbeing Standards
- With Renewable Energy

Specialist Housing

- Older People
- Supported Living
- Disabilities

Vulnerable Adults Housing Needs Assessment

Bespoke Solutions



My Home

- Generous internal space standards
- Plenty of natural light in the home and in circulation spaces
- Balconies and outdoor space, avoiding internal corridors and single-aspect flats
- Circulation spaces that encourage interaction and avoid an “institutional feel”



My Health & Care

- Adaptability and 'care aware' design which is ready for emerging telecare and tele-healthcare technologies
- Individual assessments
 - Complexity of need
 - Self-neglect
 - Fire
 - Frailty
 - Disability



Making places and homes
work for vulnerable adults
ensures it works for everyone

THANK YOU / MEUR RAS

